

- GENERAL NOTES:**
- HANDRAIL OR FENCE LOADING TO BE DESIGNED ACCORDING TO LOCAL BUILDING CODE REQUIREMENTS UNLESS OTHERWISE SPECIFIED.
  - HANDRAIL OR FENCE ATTACHEMENTS TO BE DESIGNED ON A SITE SPECIFIC BASIS BY A PROFESSIONAL ENGINEER.
  - WALLS TO BE BUILT ACCORDING TO SITE SPECIFIC DETAILS AND NOTES PROVIDED ON SITE SPECIFIC DRAWINGS.

- BACKFILL THE WALL WITH FREE-DRAINING SAND AND GRAVEL MATERIAL AS THE HEIGHT INCREASES. IDEALLY EVERY ONE OR TWO COURSES. AT NO TIME SHOULD THE HEIGHT EXCEED 2 COURSES WITHOUT BACKFILLING UNLESS OTHERWISE DIRECTED BY THE ENGINEER. BACKFILL MUST BE COMPACTED TO 95% S.P.M.D.D. BACKFILL MATERIAL TO HAVE LESS THAN 8% PASSING NO. 200 SIEVE.

- PLACE THE GEOGRID LAYERS AS THE BACKFILLING PROCEEDS, AT THE LOCATIONS SPECIFIED. COMPACT BACKFILL AS THE GEOGRIDS IS PLACED.

- THE GEOGRID SHOULD BE CUT TO EXTEND BETWEEN THE UNITS PLUS THE SPECIFIED DISTANCE BEHIND THE WALL AS SHOWN. NO SPLICES PARALLEL TO THE WALL FACE ARE ALLOWED WITHOUT THE PERMISSION FROM THE ENGINEER.

- ORIENTATION OF THE GEOGRIDS IS OF EXTREME IMPORTANCE. THE STRONGER STRAND OF THE GEOGRID SHOULD BE PERPENDICULAR TO THE WALL FACE. ENSURE THAT THE GEOGRID EXTENDS BETWEEN THE UNITS TO THE FRONT FACE OF THE WALL.

- AFTER BEING ROLLED OUT, THE GEOGRID SHOULD BE TENSIONED BY HAND UNTIL IT IS TIGHT, FREE OF WRINKLES, AND LYING FLAT. THE GEOGRID SHOULD BE HELD FLAT WHILE BACKFILLING. CARE SHOULD BE TAKEN TO AVOID DAMAGING THE GEOGRID DURING BACKFILLING.

- ADJACENT ROLL WIDTHS SHALL BE BUTT TIGHT TOGETHER.

- ALL CONSTRUCTION OPERATIONS INCLUDING GEOGRID PLACEMENT, BACKFILLING AND COMPACTION TO BE COMPLETED UNDER GEOTECHNICAL SUPERVISION.

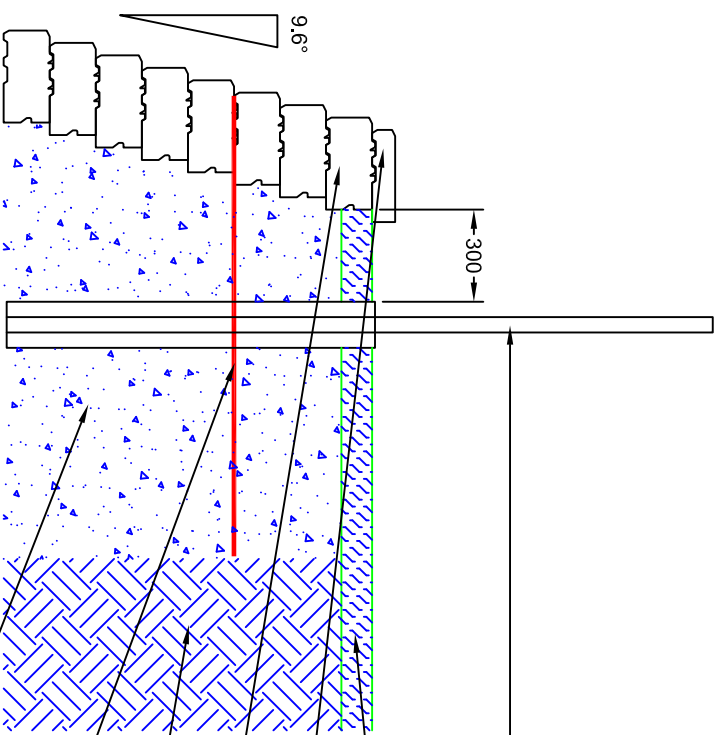
- POOR SOIL CONDITIONS AND EXCESSIVE MOISTURE MAY REQUIRE ALTERNATE DRAINAGE REQUIREMENTS AND DESIGN MODIFICATIONS.

- BATTER TO BE DETERMINED ON A SITE SPECIFIC BASIS.

- THE TOP MUST BE LANDSCAPED TO PROMOTE SURFACE RUNOFF OVER THE TOP OF THE WALL. NO UNUSUAL SURCHARGE LOADING SHOULD BE ADJACENT TO THE TOP OF THE WALL.

- ALL PRODUCT NAMES AND STYLIZED REPRESENTATIONS ARE TRADEMARKS OF PERMACON, OR APPROVED FOR USE BY PERMACON COMPANIES.

- THE APPLICABILITY OF THIS RETAINING WALL DETAIL MUST BE REVIEWED ON A SITE SPECIFIC BASIS BY A QUALIFIED PROFESSIONAL ENGINEER.



PEDESTRIAN HANDRAIL OR FENCE (DESIGNED BY OTHERS) CAST IN SONOTUBE BEHIND RETAINING WALL. SONOTUBE DEPTH TO BE DETERMINED PER SITE SPECIFIC DESIGN (SEE DRAWING WALL-GEOGRID PENETRATION FOR INSTALLATION OF GEOGRID AROUND SONOTUBE)

FINISHED GRADE

RB Wall COPING UNIT ADHERED TO STANDARD/TAPERED UNIT WITH LANDSCAPE ADHESIVE

RB Wall STANDARD/TAPERED UNITS (COURSES VARIES WITH SITE SPECIFIC DESIGN)

ORIGINAL COMPETENT RETAINED SOIL ASSUME TYPE II

MIRAFI GEOGRID - STRENGTH, LENGTH AND ELEVATION OF GEOGRID TO BE DETERMINED AS PER SITE SPECIFIC DESIGN

FREE-DRAINING SAND AND GRAVEL MATERIAL COMPACTED TO 95% S.P.M.D.D. BACKFILL TO EXTEND THE DEPTH OF GEOGRID REINFORCEMENT BACKFILL MATERIAL TO HAVE LESS THAN 8% PASSING NO. 200 SIEVE

REV.	DATE	DESCRIPTION	BY
0	NOV 24/10	ISSUED FOR USE	DPS

**DRAWING:**

**RB Wall  
TYPICAL PEDESTRIAN  
GUARD DETAIL**

**PROJECT:**  
RB Wall  
STANDARD ENGINEERING

**RB Wall™**

**NAVASCAPÉ**  
BY PERMACON

**DESIGN ENGINEER:**

**PML Peto MacCallum Ltd.**  
CONSULTING ENGINEERS

**DRAWN BY:** DPS

**DRAWING No.**

**DATE:** NOVEMBER 24, 2010

**SCALE:** NOT TO SCALE

**FILE NAME:** RB Wall Standard Handrail.DWG

**RB Wall  
HANDRAIL  
DETAIL**